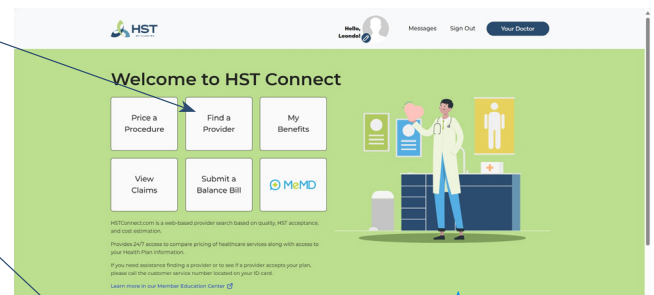
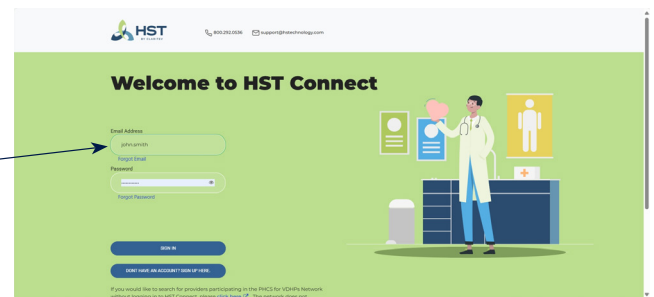


# Vistara™: How to find a Network Provider on HST Connect®

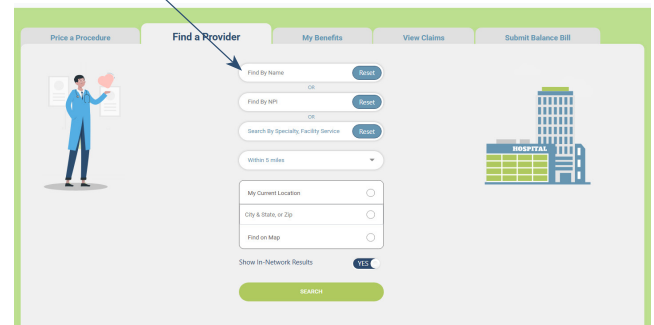
To find a provider in your network, it is recommended that you log in or set up an account to view your plan's provider network offering.

- 1 Go to [hstconnect.com](https://hstconnect.com).
- 2 Once on the home screen you will either:
  - Enter your username/password to sign in
  - Sign up for an account
- 3 To find a provider, click [here](#).
- 4 Enter the provider's name.
  - Adjust the radius as needed  
Example: select a different distance if the provider is more than 5 miles away
  - Select the 'My Current Location' bubble
  - Click 'Search'
- 5 In the search results, look for the 'VDHP Acceptance' to determine if the provider shows a purple 'In Network' rating.

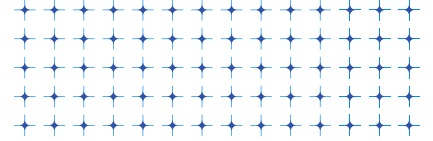


VDHP Acceptance  
In Network

If your provider does not participate in one of our networks, you can nominate them in HST Connect.



- 6 If you have any questions or do not see your provider when searching, call us at 800-440-7427 and we will assist you.



# How to find a Network Provider on HST Connect<sup>®</sup> *without logging in*

1

Go to [hstconnect.com](https://hstconnect.com).

Please note, the PHCS for VDHP Network does not include major hospitals, so if you would like to search for a hospital location, please log into HST Connect

2

On the home screen, proceed without logging in.

3

On this search screen, enter the provider's name and city/state or zip code.

- Click 'Search'

4

All the search results that populate are in-network providers.

5

If you have any questions or do not see your provider when searching, call us at 800-440-7427 and we will assist you.

**Welcome to HST Connect**

Please note that by year end 2023, logging into HST Connect will require multifactor authentication. In the coming weeks, we will post instructions for registering for multifactor authentication here.

Username

[Forgot Username](#)

Password

[Forgot Password](#)

**SIGN IN**

[DON'T HAVE AN ACCOUNT? SIGN UP HERE.](#)

If you would like to search for providers in the PHCS Network for VDHP without logging into HSTConnect, please click [here](#)

**HST's Value Driven Health Plan (VDHP)**

**Find a Provider.**

This quick search tool is offered for your convenience. It reflects the network generally, and not necessarily the specific network access your plan makes available. If you are already a member of a Value-Driven Health Plan, please [login](#) to HST Connect for the most accurate results.

Search by Name

Search by Specialty, Facility Service

City & State or Zip

**\*Please Read Before You Proceed**

We work hard to ensure our data is accurate, but provider information changes frequently. You should contact the provider to verify new patient status, location and, if applicable, network participation. Also, finding a provider on this site is not a guarantee of benefit coverage. Please contact your health plan to verify your benefits.

**Search**